

## OSBiz X3R/X5R PSU replacement

It is necessary to use the kit C39165-A7021-D6 (OSBiz RACK PSU UPG), in case of a replacement of the UPSC-DR PSU, part numbers: S30122-H7373-X900 or S30122-H7373-X901 (UPSC-DR) from the OpenScape Business X3R/X5R, by the OCPSM PSU (S30122-H7757-X), when customers have systems with the following backplanes:

S30777-Q751-Z (CUPR) for OSBIZ X3R UNIFY (S30777-U774-X901) or OCTOPUS F X3R (S30777-U774-T913)  
 S30777-Q750-Z (CUCR) for OSBIZ X5R UNIFY (S30777-U776-X901) or OCTOPUS F X5R (S30777-U776-T913)

The kit C39165-A7021-D6 (OSBiz RACK PSU UPG) contains the following items:

Pos	Code Number	Issue	Quantity	Unit	Name (english)
10	S30122-H7757-X	3	1	ST	OCPSM PSU
20	S30807-Q6958-X	1	1	ST	OCPSA Adapter
30	V32905-A3-X652	1	1	ST	UNIFY logo Label
40	V32905-A3-X616	1	1	ST	OCTOPUS logo Label
50	H70764-A79-J210	0	1	ST	Cable strap
60	C39195-A7001-B147	3	1	ST	Mains connection

### Attention:

Some precautions should be taken when handling the new PSU (OCPSM PSU):

Do not hold the PSU by the heat sinks:

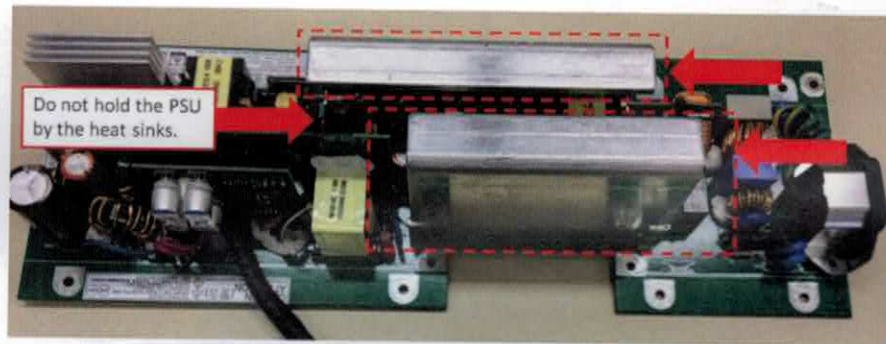


Figure 1: New PSU (OCPSM), do not hold the heat sinks

The PSU must be hold at PCBA edge, by two hands, as indicated below:



Figure 2: Instruction about how to handle the new PSU (OCPSM)



The PSU will come with two protect foam and a plastic bag:



Figure 3: New PSU (OCPSM) with protect foam and plastic bag

First remove the plastic bag, and then remove the two protect foams.

#### Remarks:

- It is important to note that if customer has Power Box/PB3000 (C39165-A7027-A5 or S30177-U773-X) connected to the system, it must be removed. The new PSU doesn't need external power supply (Power Box/PB3000 as external PSU) anymore, because the new PSU has sufficient power to feed the system. And Power Box/PB3000 as battery backup power will no longer be supported by the new PSU. If any backup power is need, the customer has to use a UPS (e.g.: nobreak).
- The SLAD modules (S30810-Q2956 and S30810-Q2957) are not supported by the new PSU.

The following instructions must be followed in order to make the PSU replacement, as explained below:

#### Removing the UPSC-DR PSU from the system

It is necessary to remove the PSU as indicated in the pictures below:

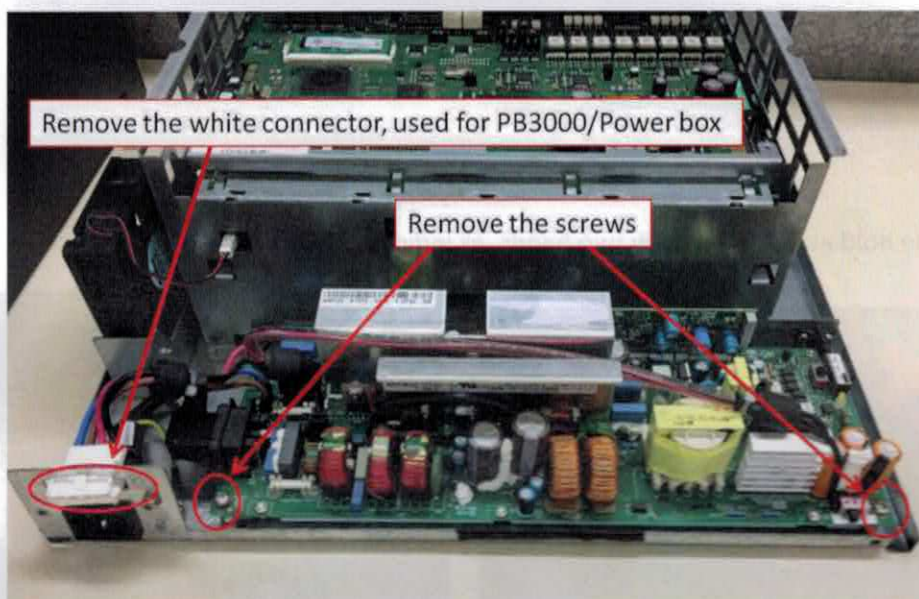


Figure 4: Removing the UPSC-DR PSU from the system



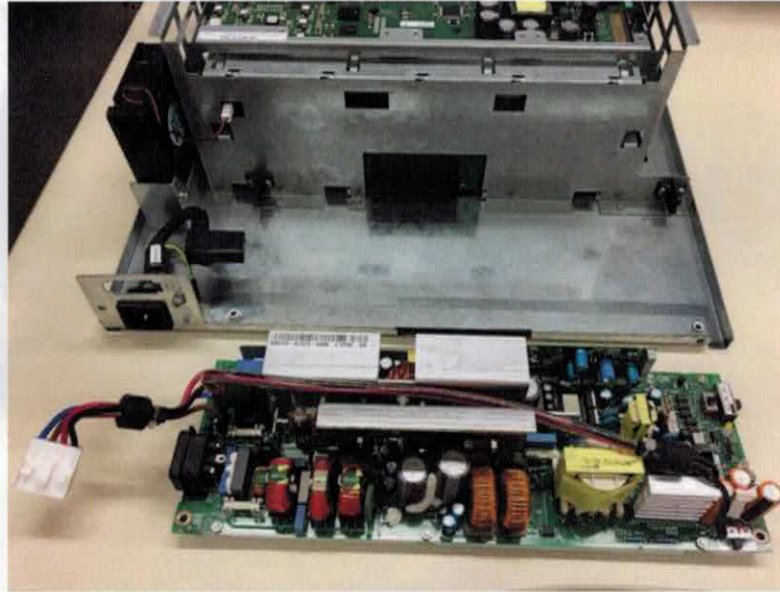


Figure 5: UPSC-DR PSU removed from the system

### Replacing the AC mains connector cable (C39195-A7001-B147) when necessary

If the mains connector cable (C39195-A7001-B147) installed in the customer system is version "1" or version "2", please replace it with the version "3" (C39195-A7001-B147-3), as indicated below:

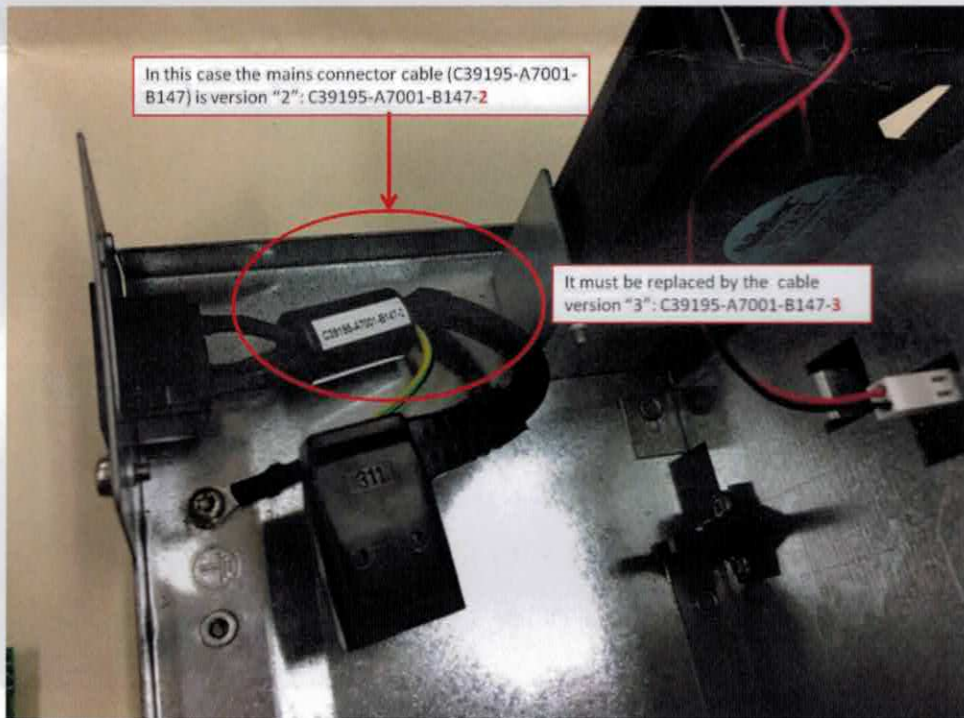


Figure 6: replace the AC mains connector cable to the version "3" (C39195-A7001-B147-3) if necessary

The AC connector cable version "3" (C39195-A7001-B147-3) is supplied together with the kit (C39165-A7021-D6).





Figure 7: AC connector cable version "3" (C39195-A7001-B147-3)



Figure 8: Replacing the mains AC connector cable (C39195-A7001-B147) to the latest version

## Connecting the OCPSA adapter to the OCPSM PSU

It is necessary to connect the PSU adapter OCPSA (S30807-Q6958-X) into the PSU, as indicated in the pictures below:



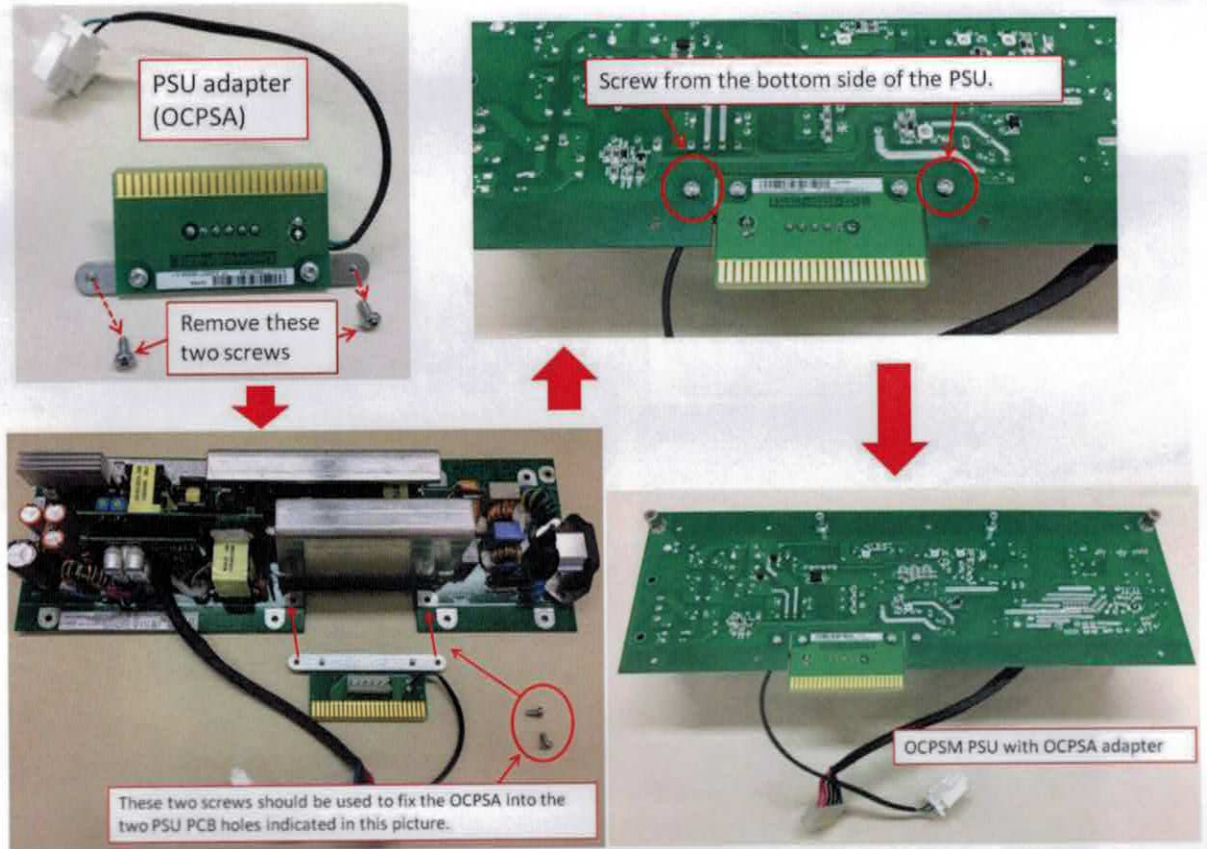


Figure 9: Connecting the PSU adapter (OCPSA) into the OCPSM PSU (S30122-H7757-X)

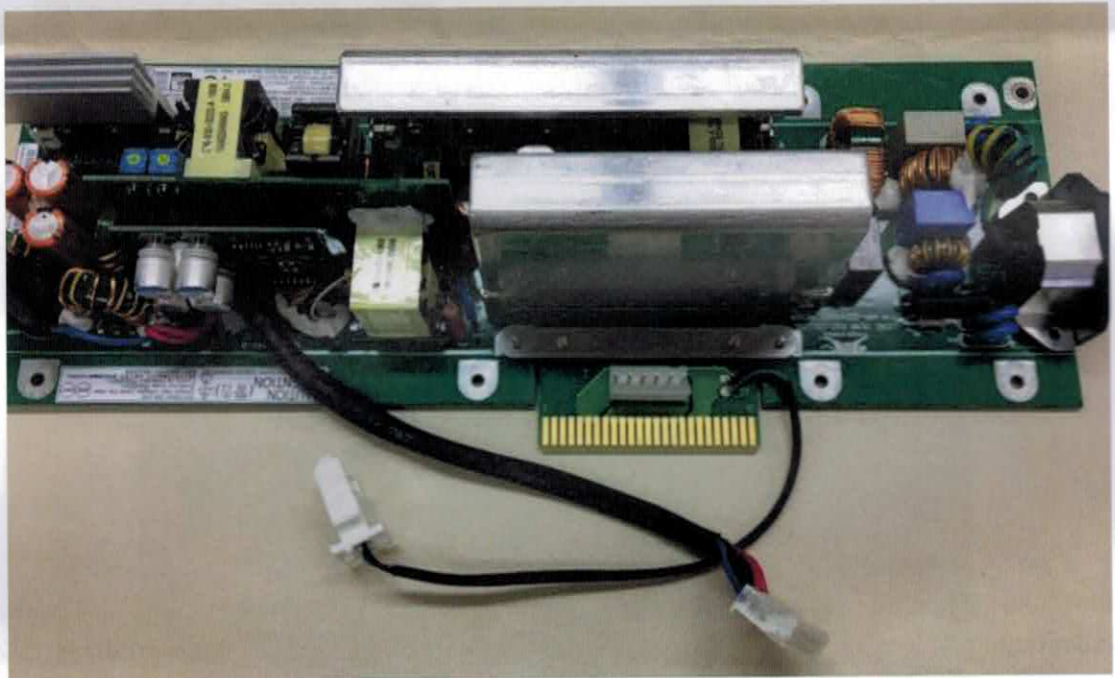


Figure 10: OCPSM PSU (S30122-H7757-X) with PSU adapter (OCPSA)

Connect the PSU output cable into the OCPSA connector, as indicated below:

Please, take care about the polarity and the pins position of the PSU output cable connector.



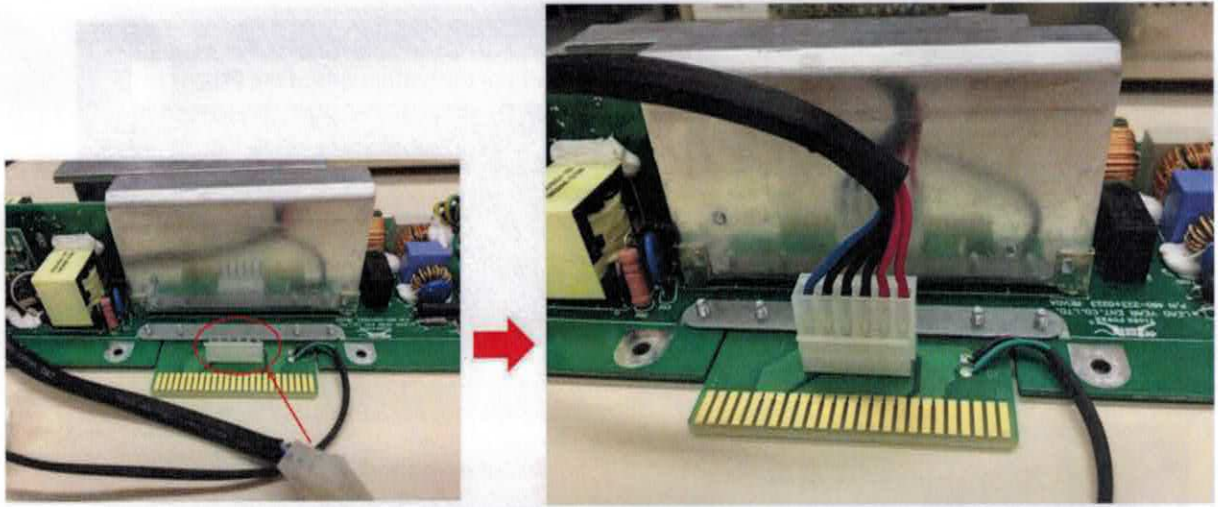


Figure 11: Connecting the PSU output cable into the OCPSA connector

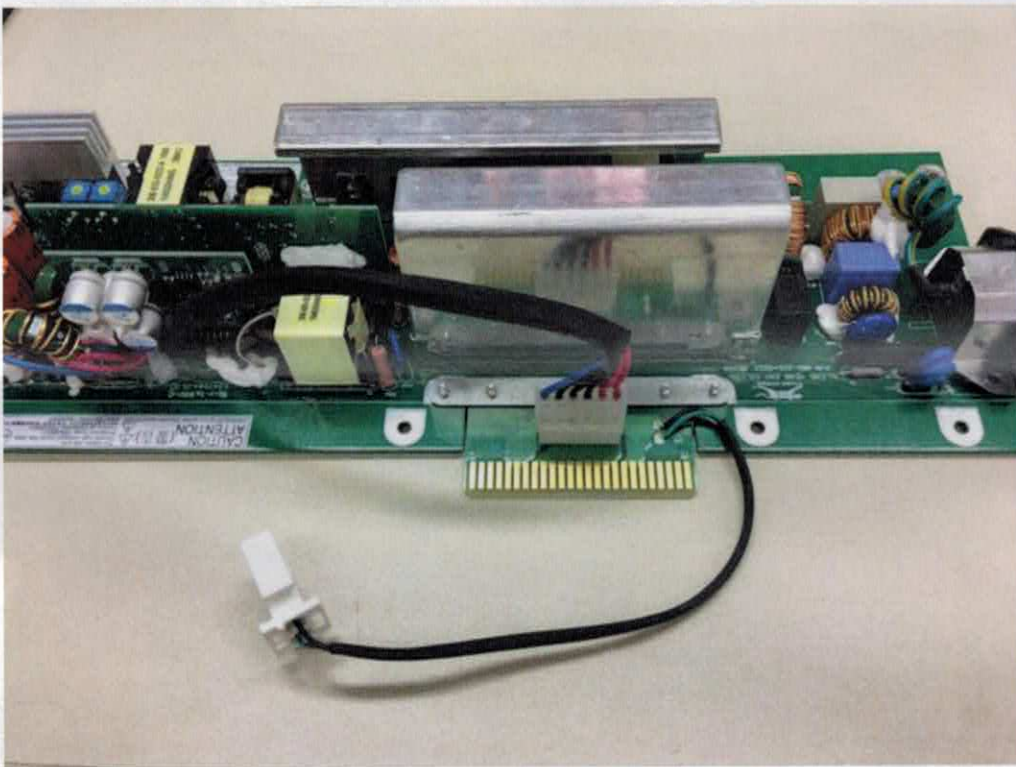


Figure 12: OCPSM PSU (S30122-H7757-X) with PSU adapter (OCPSA)

**Attention:** Take care about the polarity of the PSU output cable connector when connecting it to the OCPSA adapter, and also take care with the position of the pins (all pins must be connected), as indicated below:



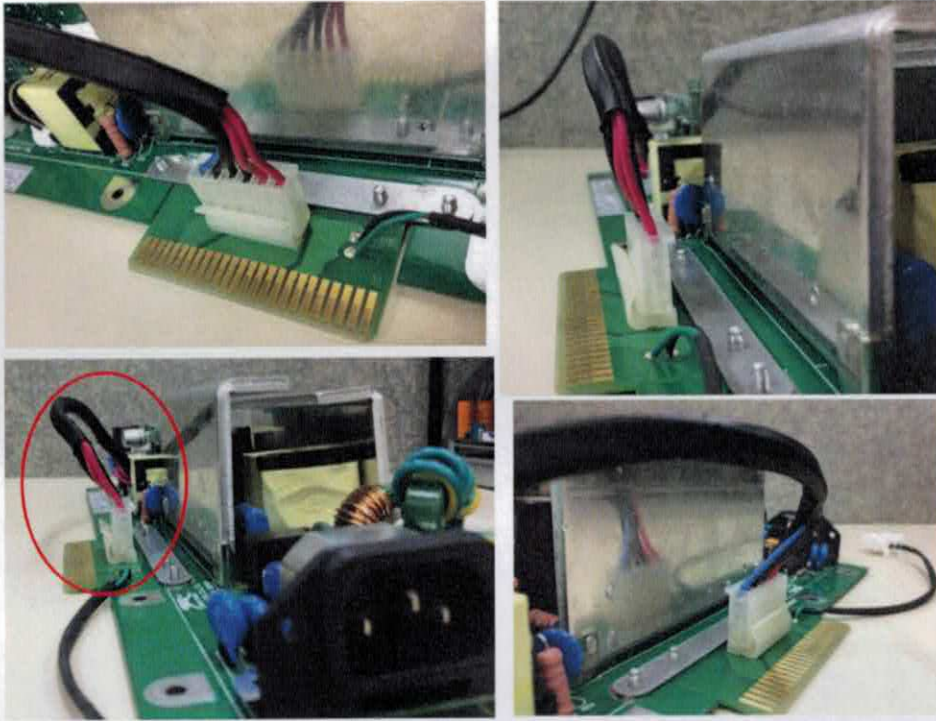


Figure 13: Take care with the polarity of the PSU output cable connector

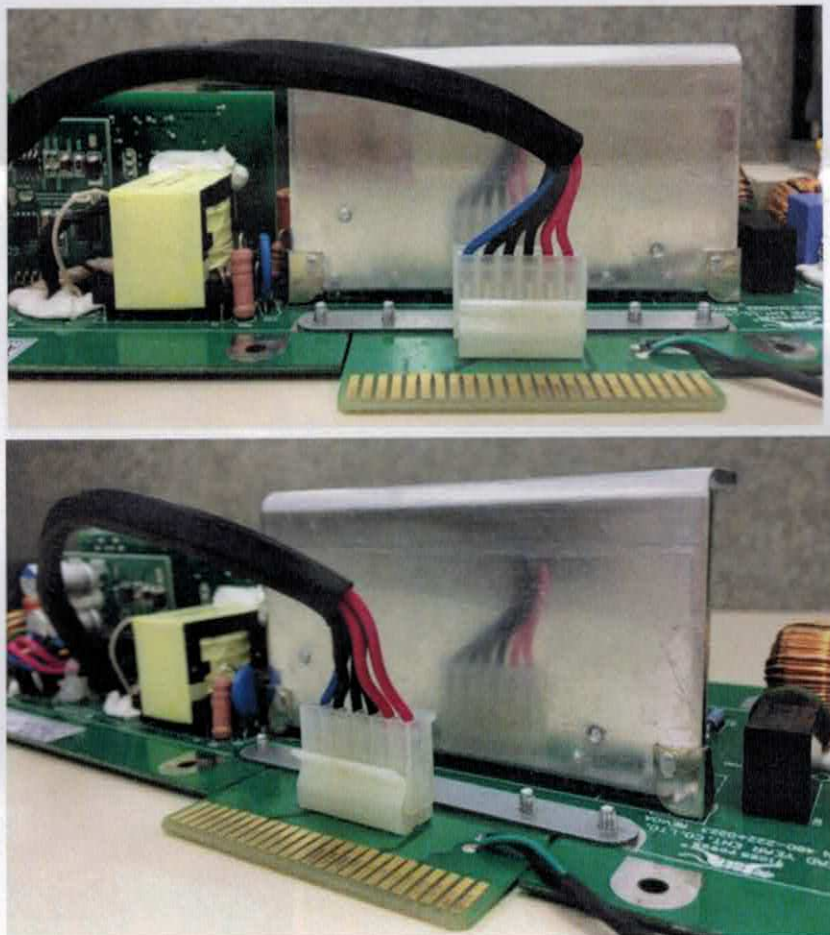


Figure 14: Detail of the PSU output cable connector, connected to the OCPSA adapter



## Install the OCPSM PSU into the system

After attaching the OCPSA adapter (S30807-Q6958-X) to the OCPSM PSU (S30122-H7757-X), and replacing the AC mains connector when necessary, install the OCPSM PSU into the system as indicated below:

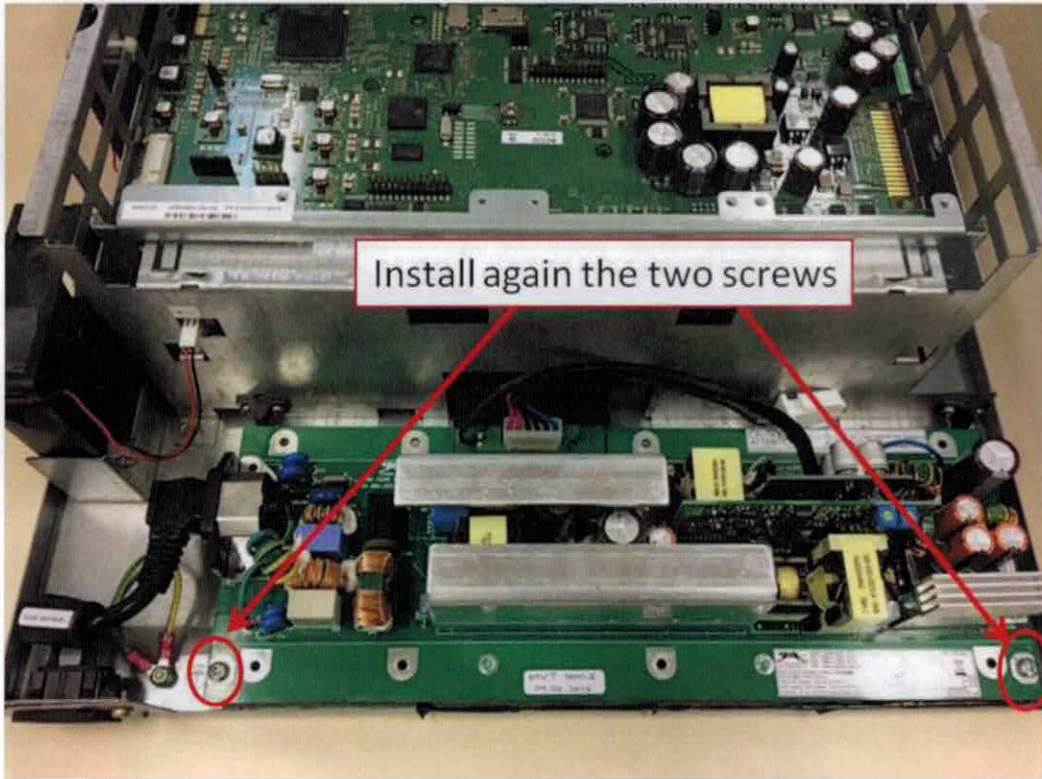


Figure 15: Assembling OCPSM PSU (S30122-H7757-X) into the OSBiz X3R/X5R system

Note that the AC mains connector cable should be connected correctly to the OCPSM AC mains connector:

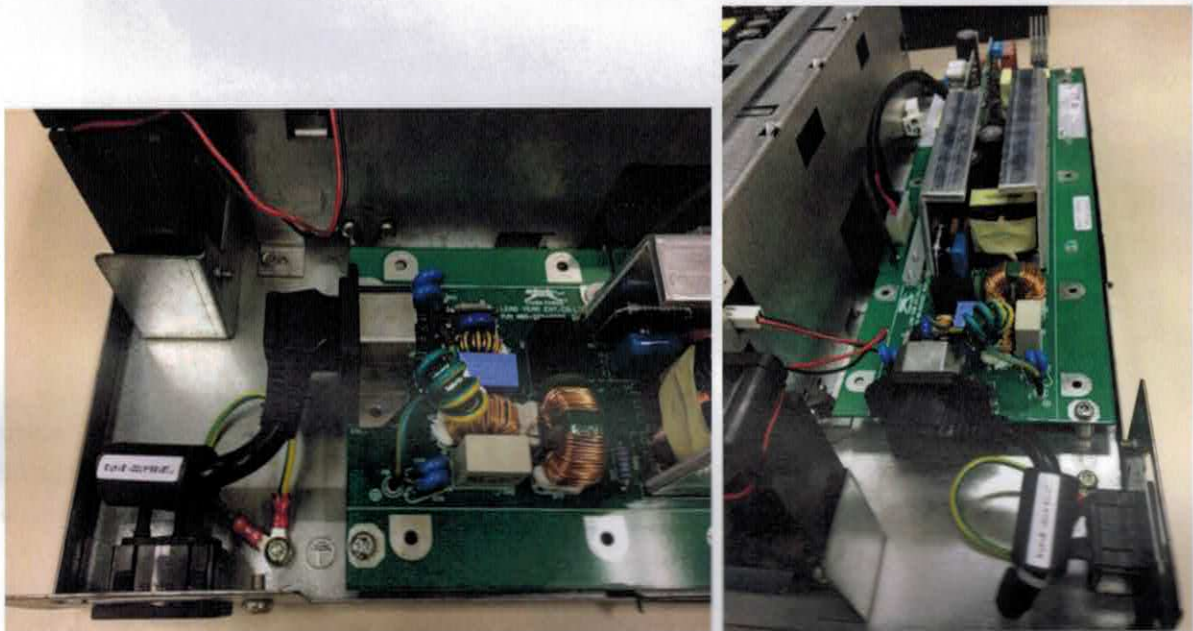


Figure 16: OCPSM PSU (S30122-H7757-X) into the OSBiz X3R/X5R systems





Use the cable strap (H70764-A79-J210) to attach the cable from the OCPSA adapter (used for the fan kit in the OSBiz X3W/X5W) into the system housing as indicated in the picture below:

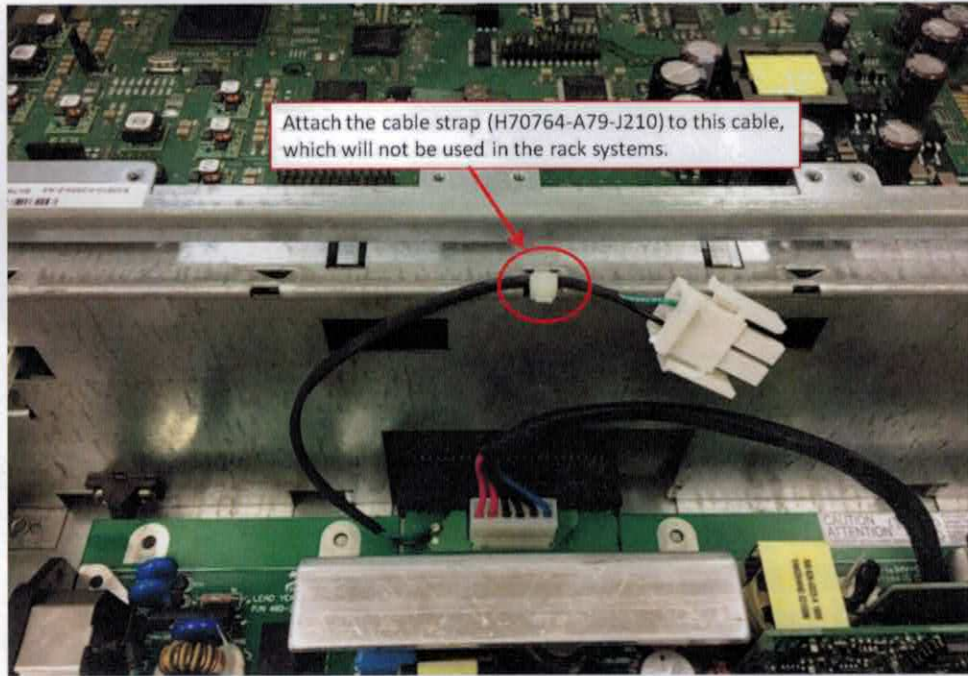


Figure 17: Attaching the (not used) cable into the system's housing

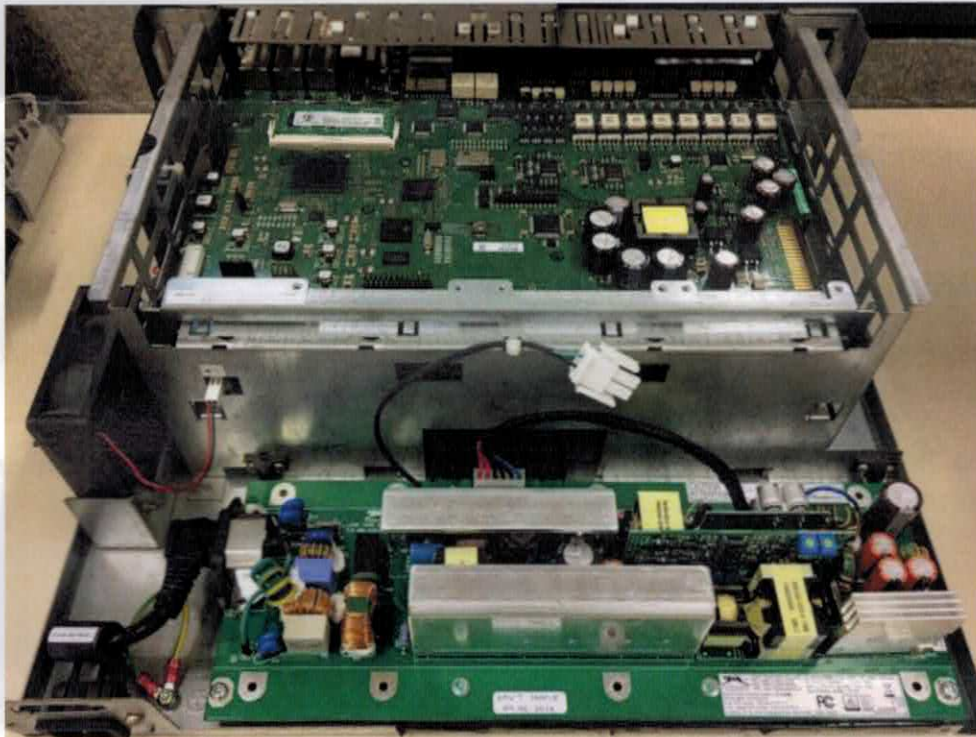


Figure 18: OCPSM PSU (S30122-H7757-X) into the OSBiz X3R/X5R systems



## Placing the Unify or Octopus logo label at rear side of the system housing

Place the Unify logo label (V32905-A3-X652) or the Octopus logo label (V32905-A3-X616) at the open hole at rear side of system housing, according to the customer system.

If the customer system is a Unify system:

OSBIZ X3R UNIFY (S30777-U774-X901) or  
OSBIZ X5R UNIFY (S30777-U776-X901)

with Unify logo at front side of the system, it should be placed the Unify logo label (V32905-A3-X652) at the open hole at rear side of the system housing, as indicated below:



Figure 19: Placing the Unify logo label (V32905-A3-X652) at the open hole of the system housing

If the customer system is an Octopus system:

OCTOPUS F X3R (S30777-U774-T913) or  
OCTOPUS F X5R (S30777-U776-T913)

with Deutsche Telekom logo at front side of the system, it should be placed the Octopus logo label (V32905-A3-X616) at the open hole at rear side of system housing, as indicated below:

